

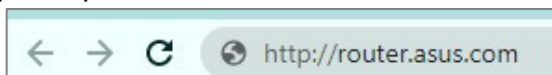
Asus Router Guide for Fibre & VLAN on

There is a generic guide for an Asus router (E.g., AX55, 58/59u, 68u, etc.). We have found that most Asus routers use the same setup configuration.



Log into the router's settings page

1. Connect a device (phone, laptop, tablet etc.) to the Wi-Fi network, this might be labelled "Asus xxx".
2. Open a web browser on the device, for example, Google Chrome, Safari, or Firefox.
3. Type `http://router.asus.com` or `192.168.1.1` into the address search bar:



4. Click 'Enter' or 'Go'.
5. You should then be presented with a login page. The username and password are '**admin**' by default. Or sometimes it is the username and password found on the back of the router. *You may also be asked to set a new password; please set it to something you will remember in case you need to re-login.*

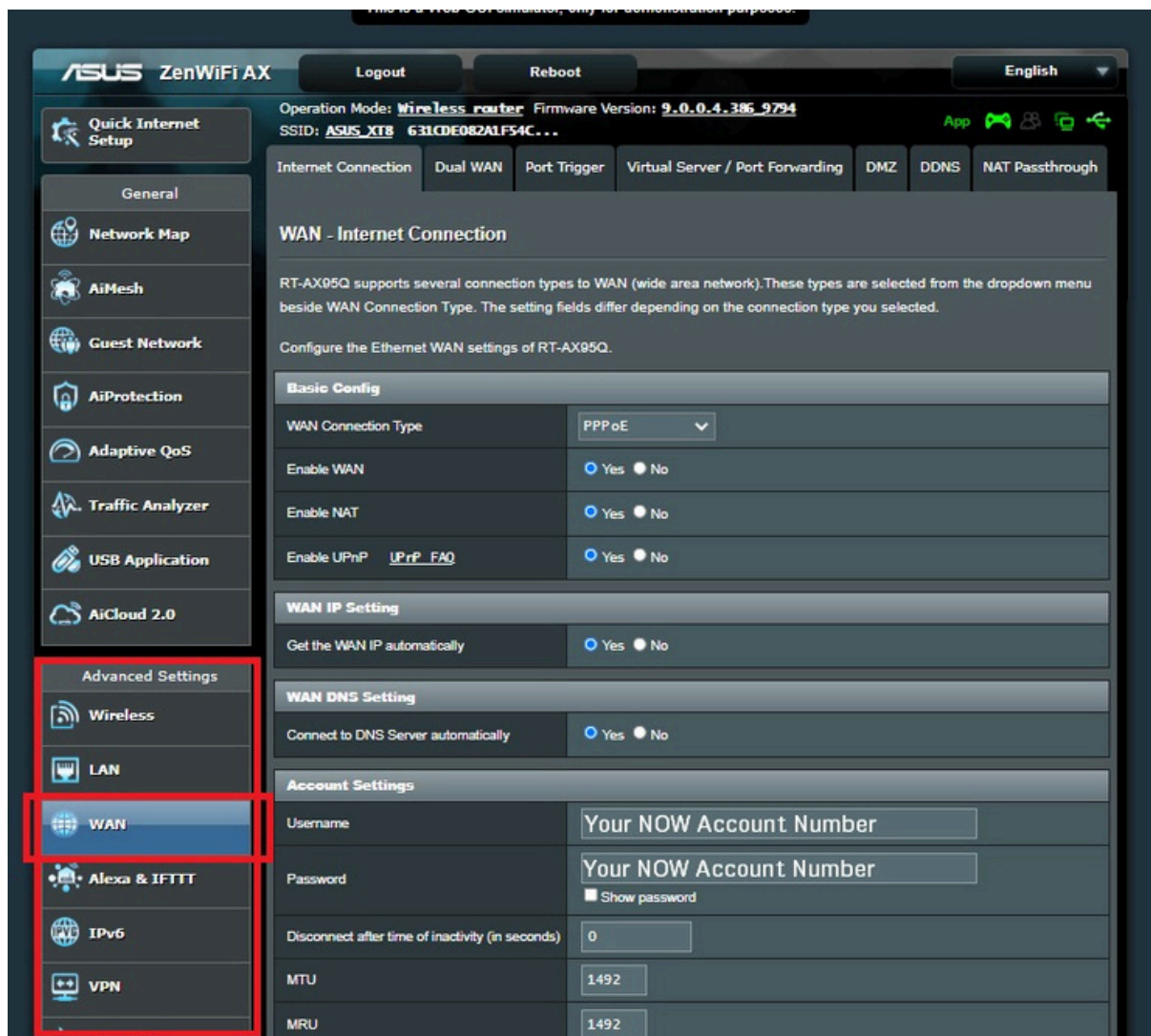
Add the correct connection settings

1. Once you've logged in, you should see a panel down the left-hand side with the settings. Navigate to '**Advanced Settings**', then to '**WAN**'.
2. Select '**PPPoE**' as the '**WAN Connection Type**'. Leave all the other options under '**Basic Config**', '**WAN IP**', and '**WAN DNS**' as the default options.
3. Under '**Account Settings**', change the Username and Password to: **Your Now Account Number**.
4. MTU & MRU: **1492**
5. Leave all other settings as the default value/ option.
6. Click '**Apply**'.

7. Under '**Special Requirement from ISP**', change '**Enable VPN + DHCP Connection**' to '**No**'.
8. Check the connection; some routers will connect automatically after the application. If you're still not connected, proceed to step 8.
9. Under '**Advanced Settings**', select '**LAN**'. Under '**LAN**', there is a tab at the top of the page labelled '**IPTV**'. Click this.
10. Under '**Select ISP Profile**', scroll down to the options till you find '**Manual Setting**'.
11. Set the '**Internet**' VID to 10. Leave the **PRIO** as 0.
12. Leave all the other settings on the page as the default values/options.
13. Click '**Apply**'.

Congratulations! You have just configured the Asus router. You should now be able to connect the internet. How good!

WAN Connection Settings



Special Requirement from ISP	
Enable VPN + DHCP Connection	<input type="radio"/> Yes <input checked="" type="radio"/> No
Host Name	<input type="text"/>
MAC Address	<input type="text"/> MAC Clone
Extend the TTL value	<input type="radio"/> Yes <input checked="" type="radio"/> No
Spoof LAN TTL value	<input type="radio"/> Yes <input checked="" type="radio"/> No

LAN Connection Settings

Quick Internet Setup

General

Network Map

AiMesh

Guest Network

AiProtection

Adaptive QoS

Traffic Analyzer

USB Application

AiCloud 2.0

Advanced Settings

Wireless

LAN

Operation Mode: **Wireless Router** Firmware Version: **9.0.0.4.386.9794**
SSID: **ASUS_XT8 631CDE082A1F54C...**

LAN IP DHCP Server Route IPTV Switch Control

LAN - IPTV

To watch IPTV, the WAN port must be connected to the Internet. Please go to [WAN - P](#) assigned to primary WAN.

LAN Port

Select ISP Profile	Manual Setting	
Internet	VID 10	PRIOR 0
LAN Port 3	VID	PRIOR 0
LAN Port 2	VID	PRIOR 0

Special Applications

Use DHCP routes	Microsoft
Enable multicast routing	Disable
UDP Proxy (Udpxy)	0

Apply

If you are still having trouble getting online, please give us a call!
0800 438 669 – Option 2 for Technical Support